

Алматы (7273)495-231
Ангарск (3955)60-70-56
Архангельск (8182)63-90-72
Астрахань (8512)99-46-04
Барнаул (3852)73-04-60
Белгород (4722)40-23-64
Благовещенск (4162)22-76-07
Брянск (4832)59-03-52
Владивосток (423)249-28-31
Владикавказ (8672)28-90-48
Владимир (4922)49-43-18
Волгоград (844)278-03-48
Вологда (8172)26-41-59
Воронеж (473)204-51-73
Екатеринбург (343)384-55-89

Иваново (4932)77-34-06
Ижевск (3412)26-03-58
Иркутск (395)279-98-46
Казань (843)206-01-48
Калининград (4012)72-03-81
Калуга (4842)92-23-67
Кемерово (3842)65-04-62
Киров (8332)68-02-04
Коломна (4966)23-41-49
Кострома (4942)77-07-48
Краснодар (861)203-40-90
Красноярск (391)204-63-61
Курск (4712)77-13-04
Курган (3522)50-90-47
Липецк (4742)52-20-81

Магнитогорск (3519)55-03-13
Москва (495)268-04-70
Мурманск (8152)59-64-93
Набережные Челны (8552)20-53-41
Нижний Новгород (831)429-08-12
Новокузнецк (3843)20-46-81
Ноябрьск (3496)41-32-12
Новосибирск (383)227-86-73
Омск (3812)21-46-40
Орел (4862)44-53-42
Оренбург (3532)37-68-04
Пенза (8412)22-31-16
Петрозаводск (8142)55-98-37
Псков (8112)59-10-37

Пермь (342)205-81-47
Ростов-на-Дону (863)308-18-15
Рязань (4912)46-61-64
Самара (846)206-03-16
Саранск (8342)22-96-24
Санкт-Петербург (812)309-46-40
Саратов (845)249-38-78
Севастополь (8692)22-31-93
Симферополь (3652)67-13-56
Смоленск (4812)29-41-54
Сочи (862)225-72-31
Ставрополь (8652)20-65-13
Сургут (3462)77-98-35
Сыктывкар (8212)25-95-17
Тамбов (4752)50-40-97

Тверь (4822)63-31-35
Тольятти (8482)63-91-07
Томск (3822)98-41-53
Тула (4872)33-79-87
Тюмень (3452)66-21-18
Ульяновск (8422)24-23-59
Улан-Удэ (3012)59-97-51
Уфа (347)229-48-12
Хабаровск (4212)92-98-04
Чебоксары (8352)28-53-07
Челябинск (351)202-03-61
Череповец (8202)49-02-64
Чита (3022)38-34-83
Якутск (4112)23-90-97
Ярославль (4852)69-52-93

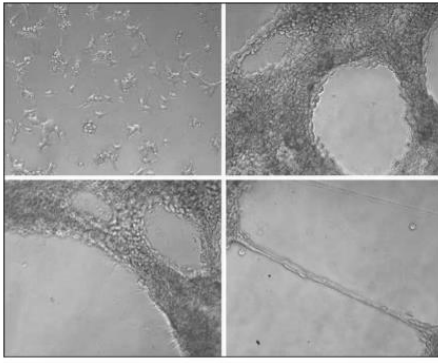
Россия +7(495)268-04-70

Казахстан +7(7172)727-132

Киргизия +996(312)96-26-47

www.sigmaaldrich.nt-rt.ru | | scx@nt-rt.ru

Технические характеристики на синтетические 3d-гидрогели, 3D- гидрогели природного происхождения, каркасы для 3D-культуры клеток компании **Sigma-Aldrich**



E1270

ECM Gel from Engelbreth-Holm-Swarm murine sarcoma

liquid, BioReagent, suitable for cell culture

PROPERTIES

BioReagent

300

liquid

8-12 mg/mL

cell culture | mammalian: suitable

P02468

P02469

P10493

P19137

P43407

Q61001

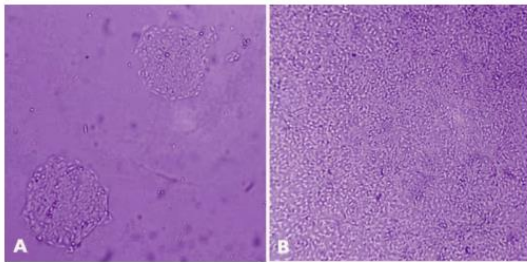
Q61092

Q61789

dry ice

-20°C

mouse ... **Lama1(16772)** , **Lama3(16774)** , **Lama5(16776)** , **Lamb1-1(16777)** , **Lamc1(226519)** , **Lamc2(16782)** , **Nid1(18073)** , **Sdc2(15529)**



MaxGel™ ECM

E0282

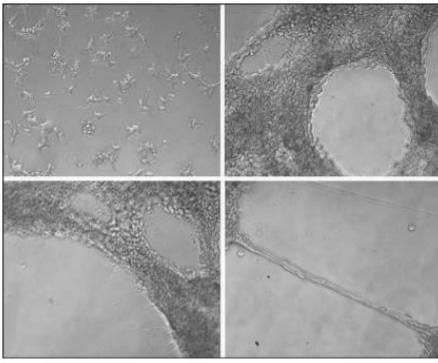
MaxGel™ ECM

PROPERTIES

200

liquid

-70°C



E6909
ECM Gel from Engelbreth-Holm-Swarm murine sarcoma

PROPERTIES

200
 BioReagent
 liquid
 7-9 mg/mL
 cell culture | mammalian: suitable

P02468

P02469

P10493

P19137

P43407

Q05793

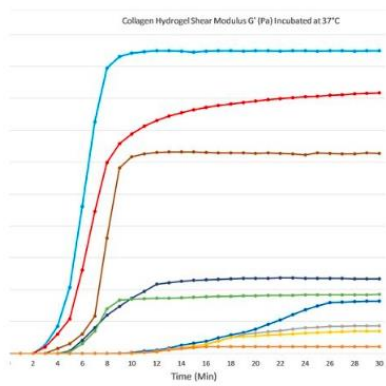
Q61001

Q61092

Q61789

dry ice
 -20°C

mouse ... **Hspg2(15530)** , **Lama1(16772)** , **Lama3(16774)** , **Lama5(16776)** , **Lamb1-1(16777)** , **Lamc1(226519)** , **Lamc2(16782)** , **Nid1(18073)** , **Sdc2(15529)**

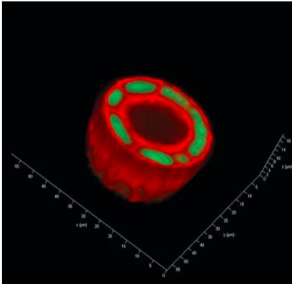


5074

PureCol™ EZ Gel solution

PROPERTIES

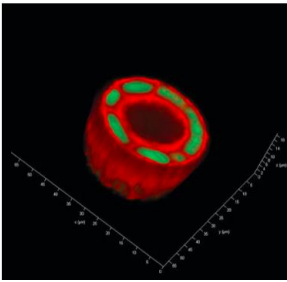
bovine skin
200
 sterile
 ≥99% (SDS-PAGE Electrophoresis – Silver Stain, SDS-PAGE)
 solid
 pkg of 35 mL
 cell culture | mammalian: suitable
 wet ice
 2-8°C



TRUE1

TrueGel3D Hydrogel Kits

CD cell-degradable crosslinker and RGD peptide



TRUE7

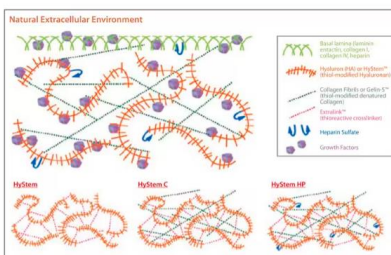
TrueGel3D Hydrogel Kits

SLO-DEXTRAN, allow cell recovery, CD cell-degradable crosslinker

PROPERTIES

dry ice

-70°C



HYS020

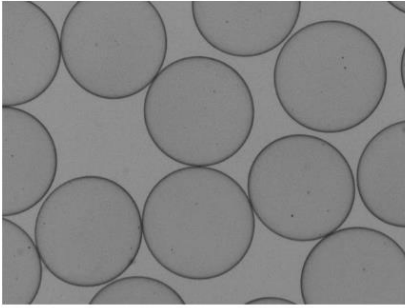
HyStem® Cell Culture Scaffold Kit

For 7.5 mL of hydrogel scaffold solution

PROPERTIES

200

-20°C

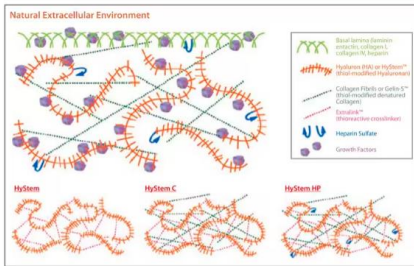


CIB001
Cell-in-a-Box®

Cell Encapsulation Kit

PROPERTIES

(up to 5 experiments, each creating ~120 capsules, each containing between 4,000 and 40,000 cells.)
 room temperature

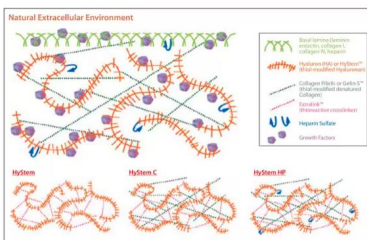


HYSC020
HyStem®-C Cell Culture Scaffold Kit

For 7.5 mL of hydrogel scaffold solution

PROPERTIES

100
 -20°C

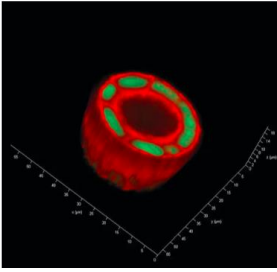


HYSHPO20
HyStem®-HP Cell Culture Scaffold Kit

For 7.5 mL of hydrogel scaffold solution

PROPERTIES

100
 -20°C



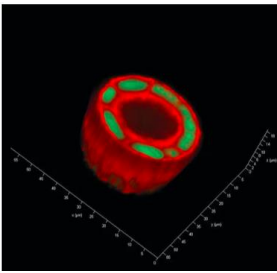
TRUE6

TrueGel3D Hydrogel Kits

SLO-DEXTRAN, allow cell recovery, PEG non cell-degradable crosslinker

PROPERTIES

dry ice
-70°C



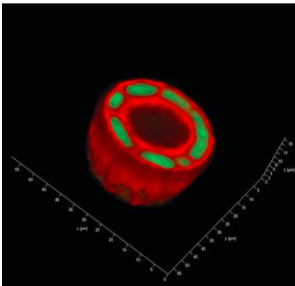
TRUE8

TrueGel3D Hydrogel Kits

SLO-PVA, CD cell-degradable crosslinker

PROPERTIES

dry ice
-70°C



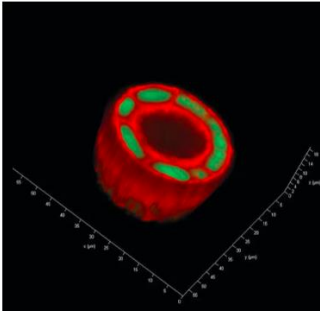
TRUE2

TrueGel3D Hydrogel Kits

FAST-DEXTRAN, allow cell recovery, PEG non cell-degradable crosslinker

PROPERTIES

dry ice
-70°C

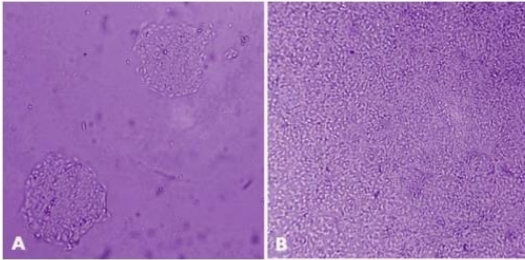


TRUE3
TrueGel3D Hydrogel Kits

FAST-DEXTRAN, allow cell recovery, CD cell-degradable crosslinker

PROPERTIES

dry ice
-70°C

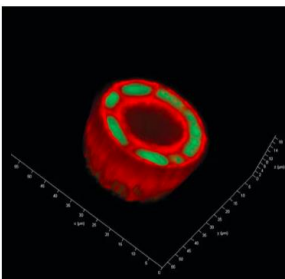


M1073
MaxGel™ ECM

96 well plate

PROPERTIES

200
0.8-1.2 mg/mL protein
-70°C

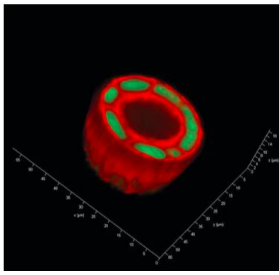


TRUE9
TrueGel3D Hydrogel Kits

SLO-PVA, PEG non cell-degradable crosslinker

PROPERTIES

dry ice
-70°C

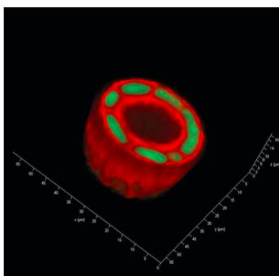


TRUE5
TrueGel3D Hydrogel Kits

FAST-PVA, PEG non cell-degradable crosslinker

PROPERTIES

dry ice
-70°C



TRUE4
TrueGel3D Hydrogel Kits

FAST-PVA, CD cell-degradable crosslinker

PROPERTIES

dry ice
-70°C



5135
SpongeCol®

Columnar Architecture

PROPERTIES

bovine

100

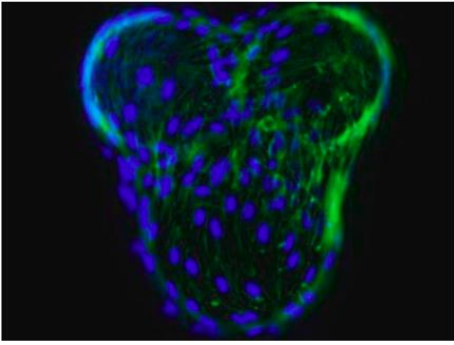
irradiated

21 mm , 5135-5EA

4 mm , 5135-25EA

1.5 mm , 5135-5EA

200 µm average pore size



5138

SphereCol®

Human Collagen Type I Coated Beads, for 3D bio-scaffold

PROPERTIES

human

irradiated

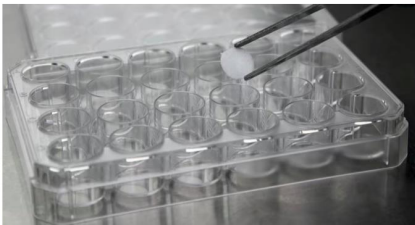
liquid

pkg of 10 g

cell culture | mammalian: suitable

~125-212 μm

room temp



Z741045

Cellusponge-Collagen

9 mm, pack of 24 ea (supplied in plate)

PROPERTIES

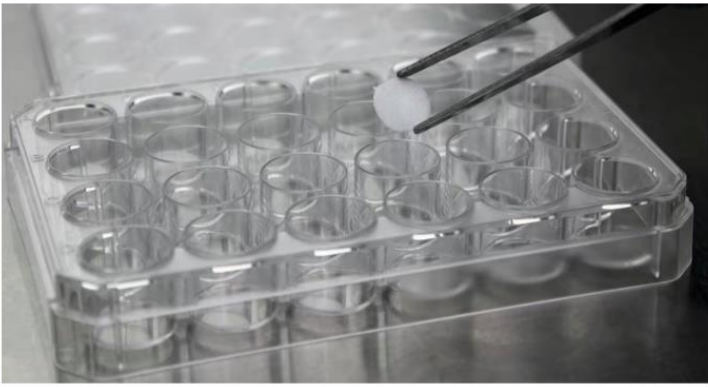
pack of 24 ea (supplied in plate)

Bio Byblos Biomedical CC092424

1 mm

non-treated surface

2-8°C



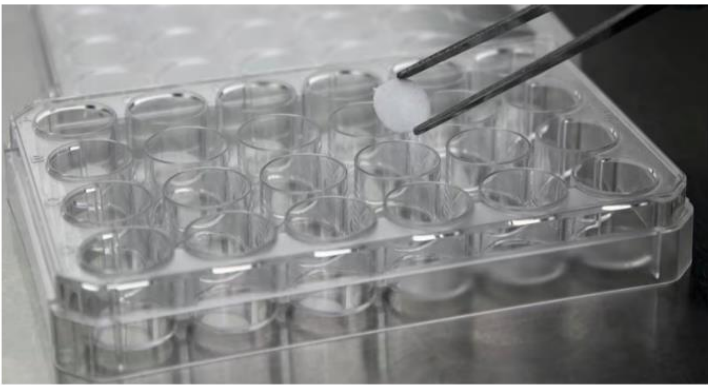
Z741050

Cellusponge-Collagen

9 mm, pack of 8 ea (supplied in plate)

PROPERTIES

pack of 8 ea (supplied in plate)
Bio Byblos Biomedical CC092408
1 mm
non-treated surface
2-8°C



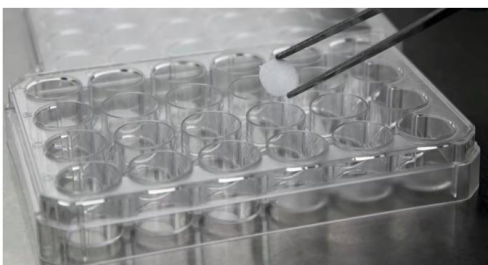
Z741056

Cellusponge-Collagen

6 mm, pack of 96 ea (supplied in vial)

PROPERTIES

pack of 96 ea (supplied in vial)
Bio Byblos Biomedical CC06BT96
1 mm
non-treated surface
2-8°C



Z741053

Cellusponge-Collagen

6 mm, pack of 16 ea (supplied in plate)

PROPERTIES

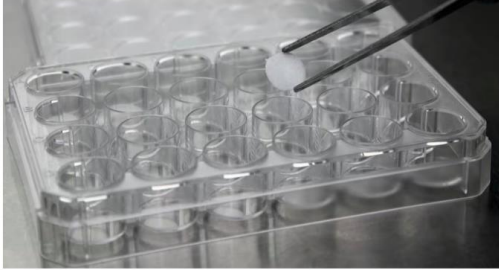
pack of 16 ea (supplied in plate)

Bio Byblos Biomedical CC064816

1 mm

non-treated surface

2-8°C



Z741059

Cellusponge-Collagen

9 mm, pack of 48 ea (supplied in vial)

PROPERTIES

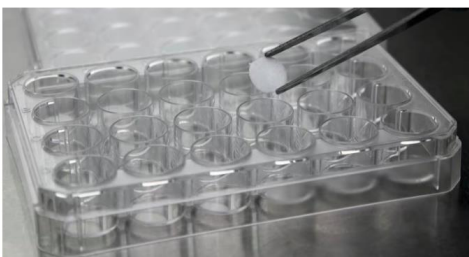
pack of 48 ea (supplied in vial)

Bio Byblos Biomedical CC09BT48

1 mm

non-treated surface

2-8°C



Z741048

Cellusponge-Collagen

6 mm, pack of 48 ea (supplied in plate)

PROPERTIES

pack of 48 ea (supplied in plate)

Bio Byblos Biomedical CC064848

1 mm

non-treated surface

2-8°C

Алматы (7273)495-231
Ангарск (3955)60-70-56
Архангельск (8182)63-90-72
Астрахань (8512)99-46-04
Барнаул (3852)73-04-60
Белгород (4722)40-23-64
Благовещенск (4162)22-76-07
Брянск (4832)59-03-52
Владивосток (423)249-28-31
Владикавказ (8672)28-90-48
Владимир (4922)49-43-18
Волгоград (844)278-03-48
Вологда (8172)26-41-59
Воронеж (473)204-51-73
Екатеринбург (343)384-55-89

Иваново (4932)77-34-06
Ижевск (3412)26-03-58
Иркутск (395)279-98-46
Казань (843)206-01-48
Калининград (4012)72-03-81
Калуга (4842)92-23-67
Кемерово (3842)65-04-62
Киров (8332)68-02-04
Коломна (4966)23-41-49
Кострома (4942)77-07-48
Краснодар (861)203-40-90
Красноярск (391)204-63-61
Курск (4712)77-13-04
Курган (3522)50-90-47
Липецк (4742)52-20-81

Магнитогорск (3519)55-03-13
Москва (495)268-04-70
Мурманск (8152)59-64-93
Набережные Челны (8552)20-53-41
Нижний Новгород (831)429-08-12
Новокузнецк (3843)20-46-81
Ноябрьск (3496)41-32-12
Новосибирск (383)227-86-73
Омск (3812)21-46-40
Орел (4862)44-53-42
Оренбург (3532)37-68-04
Пенза (8412)22-31-16
Петрозаводск (8142)55-98-37
Псков (8112)59-10-37

Пермь (342)205-81-47
Ростов-на-Дону (863)308-18-15
Рязань (4912)46-61-64
Самара (846)206-03-16
Саранск (8342)22-96-24
Санкт-Петербург (812)309-46-40
Саратов (845)249-38-78
Севастополь (8692)22-31-93
Симферополь (3652)67-13-56
Смоленск (4812)29-41-54
Сочи (862)225-72-31
Ставрополь (8652)20-65-13
Сургут (3462)77-98-35
Сыктывкар (8212)25-95-17
Тамбов (4752)50-40-97

Тверь (4822)63-31-35
Тольятти (8482)63-91-07
Томск (3822)98-41-53
Тула (4872)33-79-87
Тюмень (3452)66-21-18
Ульяновск (8422)24-23-59
Улан-Удэ (3012)59-97-51
Уфа (347)229-48-12
Хабаровск (4212)92-98-04
Чебоксары (8352)28-53-07
Челябинск (351)202-03-61
Череповец (8202)49-02-64
Чита (3022)38-34-83
Якутск (4112)23-90-97
Ярославль (4852)69-52-93

Россия +7(495)268-04-70

Казахстан +7(7172)727-132

Киргизия +996(312)96-26-47

www.sigmaaldrich.nt-rt.ru | | scx@nt-rt.ru